

YSGOL GYNRADD GYMRAEG ABERDÂR



LOCATION: ABERDARE, RHONDDA CYNON TAF

CLIENT: ANDREW SCOTT

COMPLETION: 2022

VALUE: £4M

SIZE: 950M2

SERVICE: ARCHITECTURE, INTERIORS, LANDSCAPE

SECTOR: EDUCATION

CONTRACTOR: ANDREW SCOTT

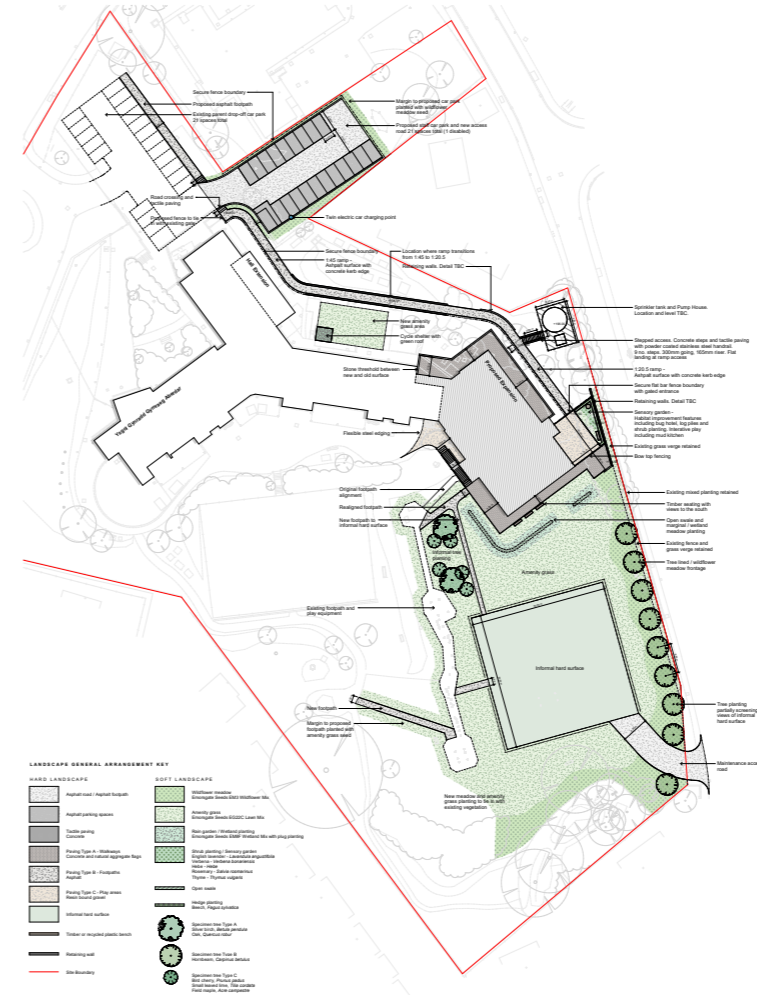
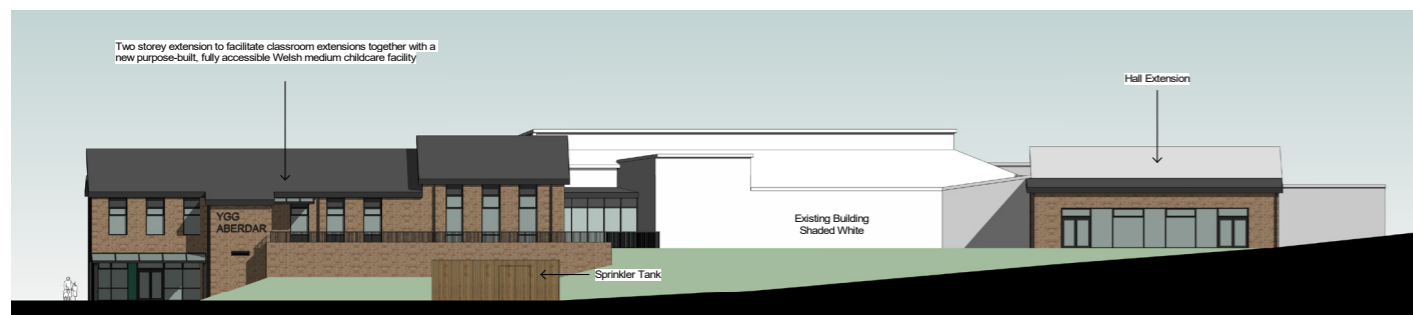
LANDSCAPE: AUSTIN-SMITH:LORD

STRUCTURES: BINGHAM HALL

SERVICES: SABA

Ysgol Gynradd Gymraeg Aberdâr is a Welsh medium primary school located on the outskirts of Aberdare, Rhondda Cynon Taf. The existing school has been expanded as part of the Local Authority's drive to increase the provision of Welsh medium education. The building was extended with a new two storey building and a single storey hall extension. The two storey extension accommodates four new classrooms with associated cloak and WC facilities, a hall/studio and a new childcare facility. The hall extension creates a larger dining area to support the enlarged school.

The scheme also involved extensive external works and the creation of a new hard surface play area, nursery play area, staff parking area, and a new path linking the Welsh medium childcare facility to the existing pupil drop off.



The building is split across two levels, and works with existing topography to create a series of external terraces. KS1 and KS2 classrooms are located at ground floor, taking advantage of expansive views down the Cynon Valley. Lower ground floor is dedicated to the new childcare facility, creating clear separation between this space and the main school building above.

The project involved extensive external works with new play areas, games court, parking area and footpaths. Sustainable drainage has been woven into the site, enhancing local ecology and creating a new learning resource for pupils.

The project was delivered to BIM level 2 with COBIE data assigned to 3D modelled assets, creating a database for future maintenance of the building. The BIM model was utilised throughout the engagement process, creating VR walkthroughs to engage end users and agree design proposals prior to construction.

The existing school building remained fully operational throughout the construction

process. Austin-Smith:Lord worked closely with the contractor to develop a phasing strategy that would minimise disruption to the existing school operations, whilst also minimising potential increases in construction costs due to complexities of build and logistics.